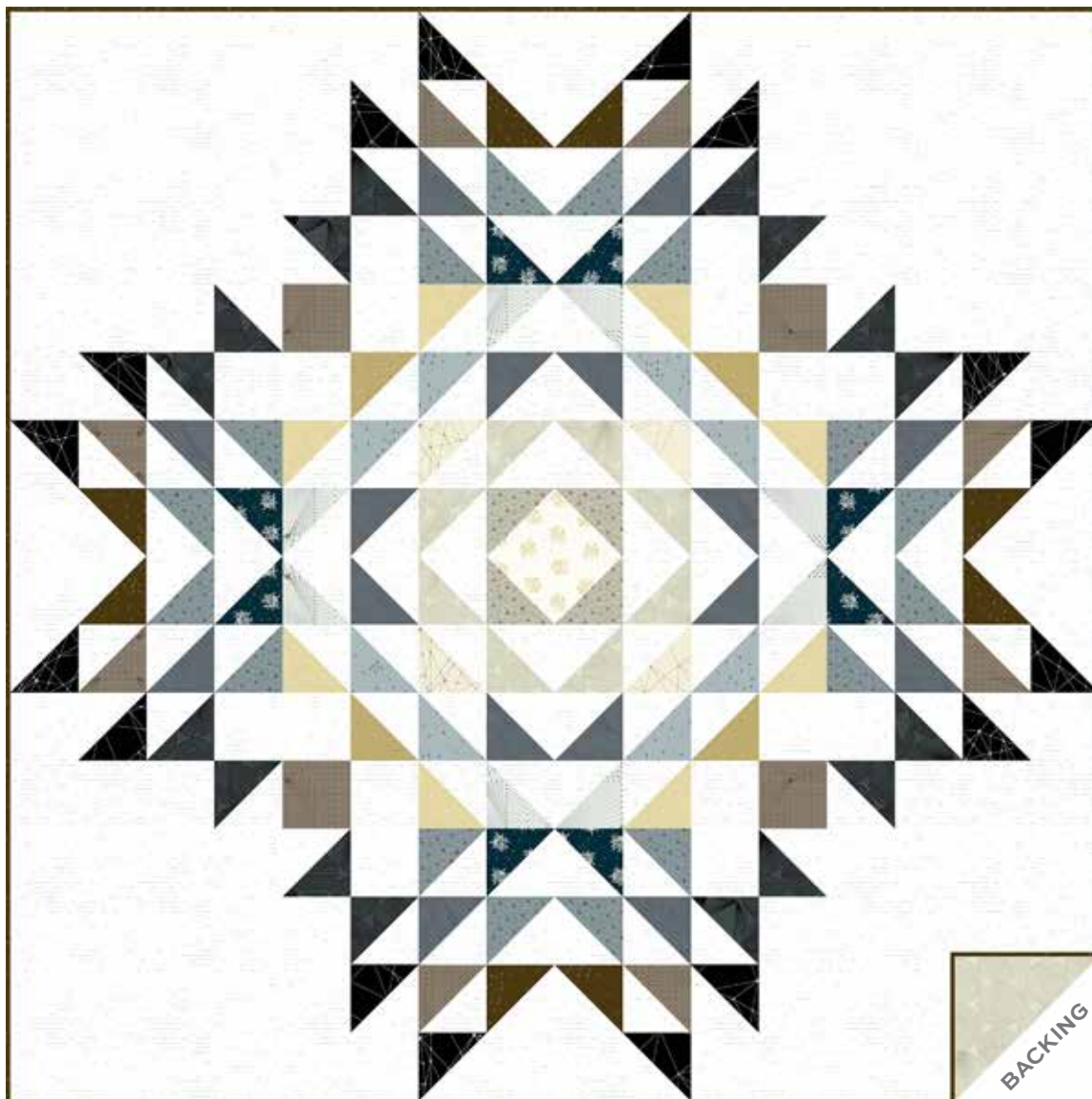


# Wallflower

GIUCY GIUCE

**a**  
100  
*years*



Canyon Road Quilt designed by: Giucy Giuce • Quilt Size: **64" x 64"**

Skill Level: **Advanced Beginner**

andover

•  
•  
• [makower.uk](http://makower.uk)  
•

Free Pattern Download Available

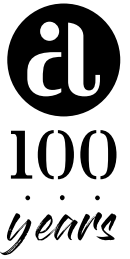
1384 Broadway New York, NY 10018  
Tel. (800) 223-5678 • [andoverfabrics.com](http://andoverfabrics.com)

8/15/21

# Canyon Road Quilt

Introducing Andover Fabrics new collection: WALLFLOWER by Giucy Giuce

Quilt designed by Giucy Giuce



Quilt finishes 64" x 64"

*A neutral palette with a touch of creamy tans colors this dynamic medallion design. The geometric prints are just right for your favorite guy. The half-square triangles are so quick to make that you can use your time to fill the corner patches with your quilting skills.*

## Cutting Directions

**Note:** Read assembly directions before cutting patches. All measurements are cut sizes and include 1/4" seam allowances. A fat 1/8 is a 9" x 20"-22" cut of fabric. A fat 1/4 is an 18" x 20"-22" cut. WOF designates the width of fabric from selvage to selvage (approximately 42" wide).

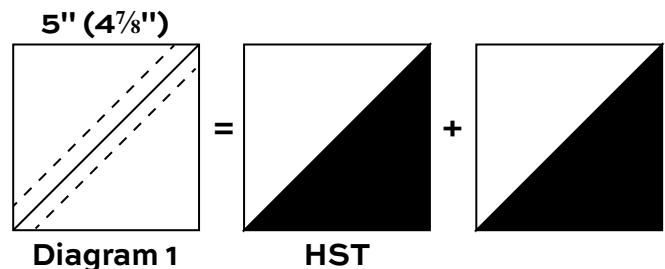
- Fabric A** Cut (4) squares 5" (4 7/8") for HST  
(read Step 1 before cutting)  
Cut (4) squares 4 1/2"
- Fabric B** Cut (2) squares 5" (4 7/8")
- Fabric C** Cut (2) squares 5" (4 7/8")
- Fabric D** Cut (4) squares 16 1/2"  
Cut (64) squares 5" (4 7/8") for HST  
Cut (56) squares 4 1/2"
- 4 Fat 1/4s** **From each:**  
Cut (8) squares 5" (4 7/8") for HST
- 6 Fat 1/8s** **From each:**  
Cut (4) squares 5" (4 7/8") for HST
- 2 Fat 1/8s** **From each:**  
Cut (2) squares 5" (4 7/8") for HST
- Binding** Cut (7) strips 2 1/2" x WOF for binding
- Backing** Cut (2) panels 36" x 72", pieced to fit quilt top with overlap on all sides

## Fabric Requirements

		Yardage	Fabric
<b>Fabric A</b>	setting	fat 1/4 yard	8957 N
<b>Fabric B</b>	center HST	fat 1/8 yard	9863 N1
<b>Fabric C</b>	center HST	fat 1/8 yard	9874 N
<b>Fabric D</b>	background	3 yards	9976 C
<b>4 Fat 1/4s</b>	HST	fat 1/4 yard each	
	8958 K 8960 K	8962 C 8963 C	
<b>6 Fat 1/8s</b>	HST	fat 1/8 yard each	
	8957 C **8960 N	8962 N 9874 K	
	9880 C1 *9880 N		
<b>2 Fat 1/8s</b>	HST	fat 1/8 yard each	
	8958 N1 9976 N		
<b>Binding</b>		1/2 yard	*9880 N
<b>Backing</b>		4 yards	**8960 N

## Making the Quilt

1. The quilt is made with half-square triangles (HST) that finish 4" square. Cutting squares 5" allows for trimming the HST after stitching. If you wish to eliminate this trimming step, cut 4 7/8" squares for HST. Set Fabric B and C squares aside for now. Use your favorite method to make HST, or follow these directions. Draw a diagonal line on the wrong side of 64 Fabric D 5" (4 7/8") squares. Place a marked square on a 5" (4 7/8") square, right sides together. Sew 1/4" seam on each side of the marked line; cut apart on the marked line (Diagram 1). Press open to make pieced HST. Trim the squares to 4 1/2" if needed. Make a total of 128 HST. Make 4 more HST for the quilt's center using the Fabric B and C squares.



# Canyon Road Quilt

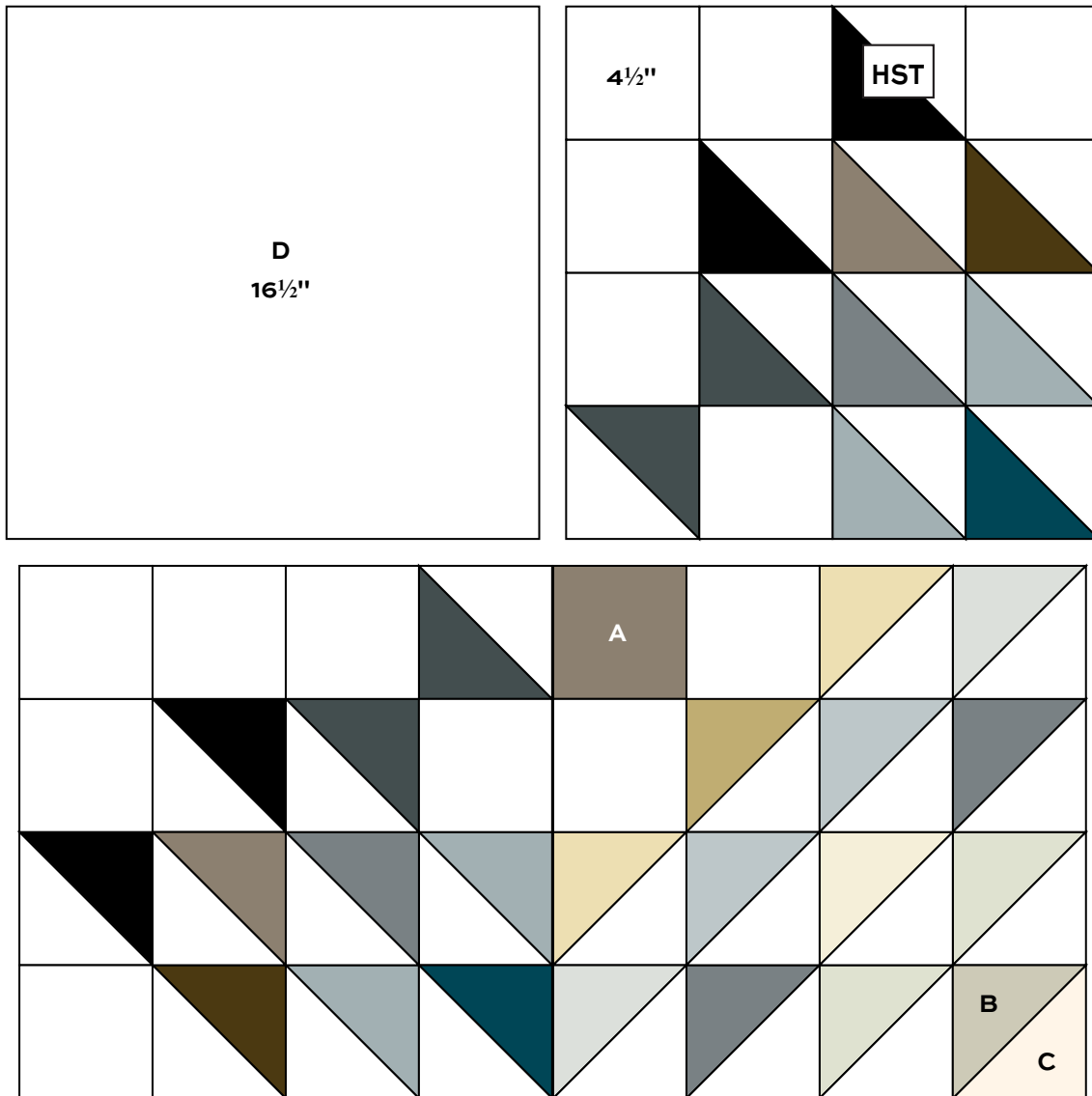


2. Referring to the Quarter Quilt Diagram, arrange the HST, Fabric D  $4\frac{1}{2}$ " squares, and a Fabric A  $4\frac{1}{2}$ " square into rows as shown. Turn the HST to match the design. Join the patches into horizontal rows to make larger units. Join the top unit with the Fabric D  $16\frac{1}{2}$ " square to make the top half of the quarter quilt. Join the top unit to the bottom unit.

3. Make 4 quarter quilts all alike. Finally, join the quarter quilts to make the quilt, rotating each unit 90 degrees to make the design shown in the quilt photograph.

## Finishing the Quilt

4. Layer the quilt with batting and backing and baste. Quilt in the ditch around block patches. Quilt the background patches as you wish. Bind to finish the quilt.



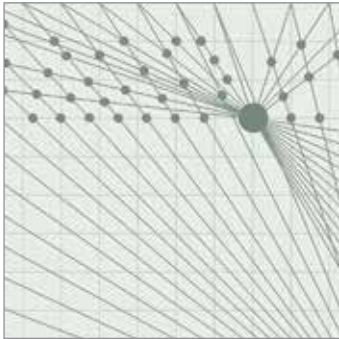
Quarter Quilt Diagram - Make 4

Quilt Diagram

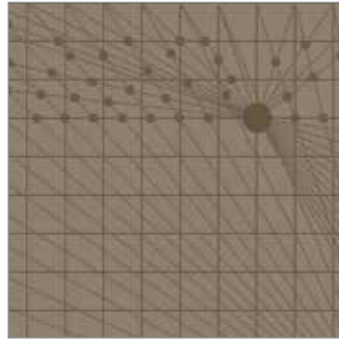
# Wallflower

GIUCY GIUCE

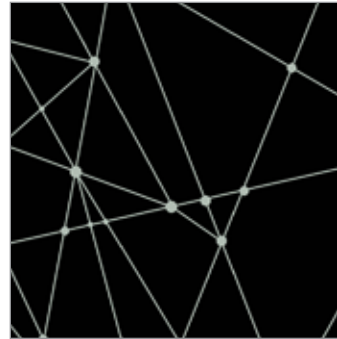
**a**  
100  
*years*



8957 C



8957 N



8958 K



8958 N1



8960 K



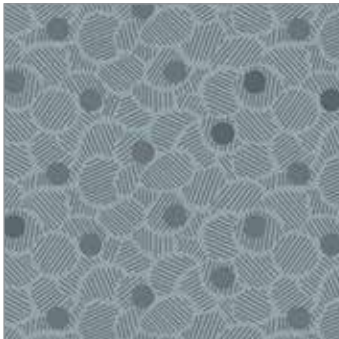
8960 N



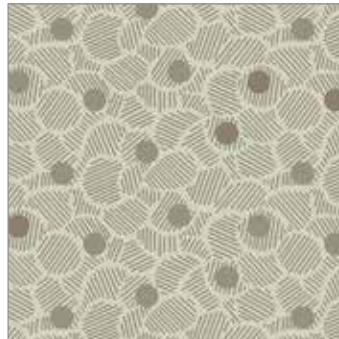
8962 C



8962 N



8963 C



8963 N1



9874 K



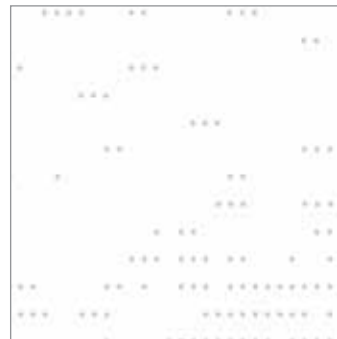
9874 N



9880 C1



9880 N



9976 C



9976 N

All fabrics are used in quilt pattern. Fabrics shown are 50% of actual size.

andover



[makower.uk](http://makower.uk)

Free Pattern Download Available

1384 Broadway New York, NY 10018  
Tel. (800) 223-5678 • [andoverfabrics.com](http://andoverfabrics.com)

8/15/21